

L | SERIES

HINO



A sleek exterior design and a stylish automotive grade interior have made the HINO L Series a popular medium duty truck choice in Canada. A reputation for quality, durability and reliability improves uptime while a cab known for comfort and convenience keeps your driver focused on the road.

With available GVWR's from 25,500 to 35,000 lbs., there is a HINO L Series truck to suit your needs, and best of all, it's BUILT IN CANADA!

 BUILT BY CANADIANS, FOR CANADIANS.



L | SERIES

HINO

The HINO L Series is equipped with one of the most **dependable and durable medium-duty engines** available in the industry, the **Cummins® B6.7**.



Engine Warranty

Standard 3 years,
unlimited mileage.*



5 Year Warranty

Allison transmission
warranty coverage
for 5 years, unlimited
mileage at no charge.*



HINOWATCH

24/7 Roadside Assistance
is standard for 3 years on
all HINO trucks with
unlimited mileage.
HINOWATCH includes
lockout, out of fuel,
battery jumpstart and
warranty towing.

STANDARD EQUIPMENT

- Air Conditioning
- AM/FM Audio System with Bluetooth®
- Tilt and Telescopic Steering Column with Lock
- Power Windows & Power Door Locks
- Power and Heated Outer Rear-view Mirrors with Convex Mirrors (2)
- Driver's Seat - High-back Premium Fabric Seat with Air Suspension & Arm Rest
- Passenger Seat - 2-Person Premium Fabric
- Fully Trimmed Cab
- Bright Finish Grille
- Driver Controlled Differential Lock (HINO L8 model)
- 1000W/120V Engine Block Heater
- Air Horn (Air Brake Model)
- Halogen Headlamps

POPULAR OPTIONAL EQUIPMENT

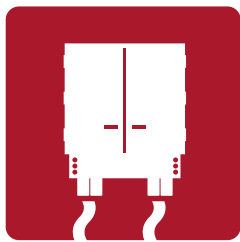
- Hendrickson Rear Air Suspension
- Alcoa Aluminum Wheels
- Bright Finish Bumper
- Driver Controlled Differential Lock (HINO L7 models)
- Multimedia Audio System with Bluetooth® and GPS Navigation
- Custom Exterior Paint Colour
- High Visibility Seat Belts
- Fender Mirrors
- AGM Batteries
- Third Battery
- LED Headlamps

[ACTIVE] Safety Systems

L | SERIES HINO



Safety starts before you start the engine. The HINO L Series cab has been designed for safe, easy entry and exit with deep all-weather grip steps, extra wide door openings and available exterior grab handles. A high seating position and a 2,385 sq. in. windshield provide maximum visibility for the driver, illuminated at night with the available LED headlamps. The advanced OnGuardMAX active safety systems are part of an optional Safety Suite package offered on select air brake equipped models.



Electronic Stability Control

Automatically intervenes when there is a high risk of directional instability that could lead to loss of vehicle control or rollover.



Collision Mitigation System*

Available radar-based collision mitigation system provides active braking on moving and stationary vehicles.

*optional



Lane Departure Warning**

An available camera-based system that helps reduce road run-offs, side swipes, and head-on collisions due to driver inattention or fatigue through distinct audible warnings for unintentional lane departures.

** optional and comes with CMS only – *
Features available in optional Safety Suite package on select air brake equipped models.



L | SERIES

HINO



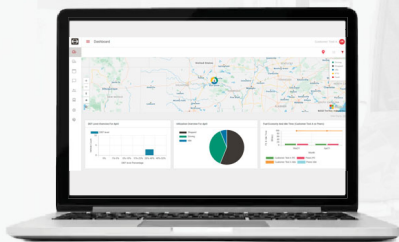
HINO is revolutionizing the connected vehicle experience with **HINO EDGE**, connecting customers to the **HINO Ultimate Support Center**, an extensive dealer network, and selected **Telematic Service Providers (TSPs)**. This maximizes truck visibility and service support, ensuring fleets have real-time access to essential information and resources, enhancing efficiency, and delivering the ultimate ownership experience.



Case Management



Get Logged In

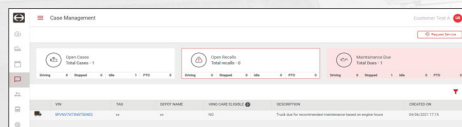


Getting started is easier than ever!

Simply log-in at hinoulimate.com with the username and password provided in your welcome email.

Once logged in, you'll have access all of your fleet's real time data.

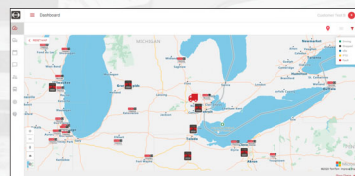
Then it's all about setting the system up the way that works best for you. Just go to the settings section of the portal and you can create new users, change times zones and select your preferred language and unit of measure.



You know your truck is in good hands when your Case Management system is powered by Decisiv and easily controlled through the HINO Ultimate Portal. If you have a fault code appear, you'll immediately get an email. Simply reply to that email to speak with a knowledgeable Ultimate Support representative. Then, in the Case Management tab, you can see all open cases.



Dashboard



The HINO Dashboard allows you to view your fleet's location, nearest dealer and how your fleet's utilization compares to others.

With HINO Benchmarking, you'll see a graphical snapshot of how you're doing compared to other similar vehicles in similar situations. Idle times, fuel economy... whatever data you need to optimize the performance of your fleet, you can find it here in real time. Never fly blind again!

Everything you need to maximize your fleet's ROI is right here, right now.

SPECIFICATIONS

ENGINE / DRIVETRAIN / AXLE

| | |
|--------------------------------|---|
| Engine model | Cummins® B6.7 |
| Displacement | 6.7 litre |
| Type | 6 cylinder in-line, water-cooled |
| Fuel System | High Pressure Common Rail System |
| Max. output @ 2,400 rpm | 240-260 hp |
| Max. torque @ 1,600 rpm | 600-660 lb.-ft. |
| Exhaust brake | Integrated with Variable Geometry Turbocharger |
| Transmission | Allison 6 Speed Automatic with FuelSense2.0 with DynActive Shifting, Neutral at Stop and Acceleration Rate Management |
| Front axle | Meritor MFS series reverse Elliot, "I" beam (oil lubricated) |
| Rear axle | Meritor, full floating, single reduction, single-speed, hypoid gears |

ELECTRICAL EQUIPMENT

| | |
|------------------------|---|
| Batteries | STD Two, parallel connection, 1300 CCA (2 x GR31) OPT Third Battery (GR31) OPT AGM Batteries (Quantity: 2) OPT AGM Batteries (Quantity: 3) |
| Alternator | STD 12V, 135A, Brushless |
| Starter kW (hp) | Delco Remy 35MT™, 12 Volt, 4.7 kW |

TANKS

| | |
|-----------------------------------|--|
| Fuel Tank | STD Single 189 litre (50 US gallon) OPT Single 340.0 litre (90 US gallon) - L6, L7 & L8 |
| DEF tank litre (US gallon) | 28 (7) Optional 59L DEF tank with 90G fuel tank option |



Weight Capacities

Front axle range, kg (lbs.): 3,630 (8,000) - 4,540 (10,000)

Rear axle range, kg (lbs.): 7,940 (17,500) - 8,620 (19,000)

HINO L6

GVWR, kg (lbs.): 11,570 (25,500) - 11,793 (26,000)

| | | |
|---|-------------------------------|--|
| Engine HP | STD 240 hp | OPT 260 hp (HINO L6L 260HP model) |
| Transmission model | STD 2200RDS | |
| | STD Hydraulic disc | OPT Full Air, dual circuit on Low Profile models |
| Rear suspension | STD Semi-elliptic leaf spring | OPT Hendrickson air suspension with dump valve |
| Rear axle ratio | STD 5.29 (L6) | STD 4.11 (L6LAB) |
| Wheel size | STD 22.5 x 8.25 (L6) | STD 19.5 x 6.75 (L6L); 19.5 x 7.50 (L6LAB) |
| Tire size | STD 11R22.5 (L6) | STD 245/70R19.5 (L6LAB) |
| Resisting bending moment, one side kgf-mm (in-lbs.) | STD 1,188,862 (1,031,900) | |
| Yield strength, kg/mm2 (psi) | STD 56.2 (80,000) | |
| Wheel type | STD Powder coated white | OPT Aluminum Alcoa |
| Wheelbase (in.) | 175 187 205 217 | 235 253 271 |

Weight Capacities

Front axle range, kg (lbs.): 5,440 (12,000)

Rear axle range, kg (lbs.): 9,530 (21,000)

HINO L7

GVWR, kg (lbs.): 14,950 (33,000)

| | | |
|---|-------------------------------|---|
| Engine HP | STD 260 hp | |
| Transmission model | STD 2500RDS | |
| Brakes | STD Hydraulic, 4 wheel disc | OPT Full Air, dual circuit |
| Rear suspension | STD Semi-elliptic leaf spring | OPT Hendrickson air suspension with dump valve (STD Air Brake Models) |
| Rear axle ratio | STD 5.29 | |
| Wheel size | STD 22.5 x 8.25 | |
| Tire size | STD 11R22.5 | |
| Resisting bending moment, one side kgf-mm (in-lbs.) | STD 1,475,588 (1,280,800) | |
| Yield strength, kg/mm2 (psi) | STD 56.2 (80,000) | |
| Wheel type | STD Powder coated white | OPT Aluminum Alcoa |
| Wheelbase (in.) | 187 205 217 235 | 253 271 280 |

Weight Capacities

Front axle range, kg (lbs.): 6,350 (14,000)

Rear axle range, kg (lbs.): 10,430 (23,000)

HINO L8

GVWR, kg (lbs.): 15,870 (35,000)

| | | |
|---|---|--------------------|
| Engine HP | STD 260 hp | |
| Transmission model | STD 3000RDS | |
| Brakes | STD Full air, dual circuit, 4-wheel drum with ABS | |
| Rear suspension | STD Hendrickson air suspension with dump valve | |
| Rear axle ratio | STD 5.38 | |
| Wheel size | STD 22.5 x 8.25 | |
| Tire size | STD 295/75R22.5 | |
| Resisting bending moment, one side kgf-mm (in-lbs.) | STD 2,317,900 (1,933,200) | |
| Yield strength, kg/mm2 (psi) | STD 84.4 (120,000) | |
| Wheel type | STD Powder coated white | OPT Aluminum Alcoa |
| Wheelbase (in.) | 187 205 217 235 | 253 271 |



MKLSERIES26Y

DISCLAIMER: Hino Motors Canada, Ltd reserves the right to discontinue items, or make changes at any time, without notice, to equipment, specifications, or materials. The product images shown may represent the range of product, or be for illustration purposes only and may not be an exact representation of the product.