

Chapter 10

MOUNTING DETAILS OF CHASSIS EQUIPMENT

1. FUEL TANK
2. AIR TANK
3. EXHAUST SYSTEM
4. DEF TANK

ABOUT CAD-DATA

CAD-DATA is contained on separate attachment file in this CD-ROM.

CONTENTS ; · EXHAUST SYSTEM

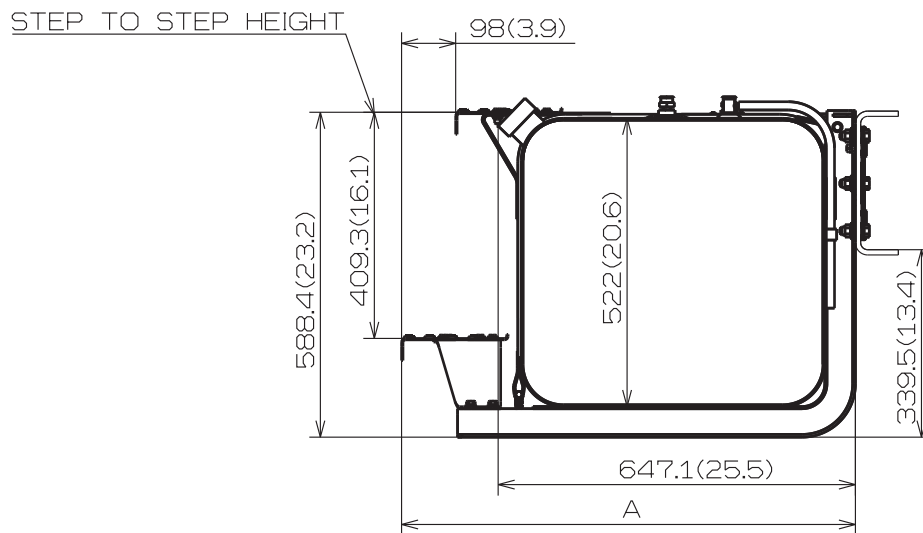
1. FUEL TANK

MOUNTED LEFT SIDE UNDER CAB. (REAR VIEW) WITH STEPS

CAPACITY : 189L (50gal)

340L (90gal)

Unit : mm (in.)



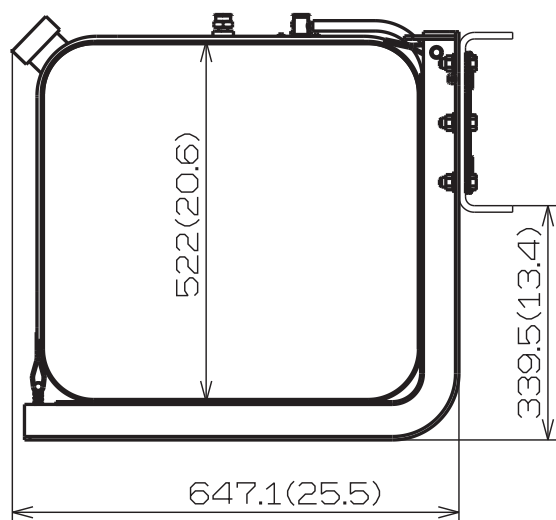
STEP POSITION	DIM A
FR STEP	822 (32.4)
RR STEP	823.7 (32.4)

DIM A = FRAME TO END OF STEP

REAR VIEW OF LEFT FUEL TANK SHOWN.

MOUNTED LEFT SIDE UNDER CAB. (REAR VIEW)
WITHOUT STEPS
CAPACITY : 340L (90gal)

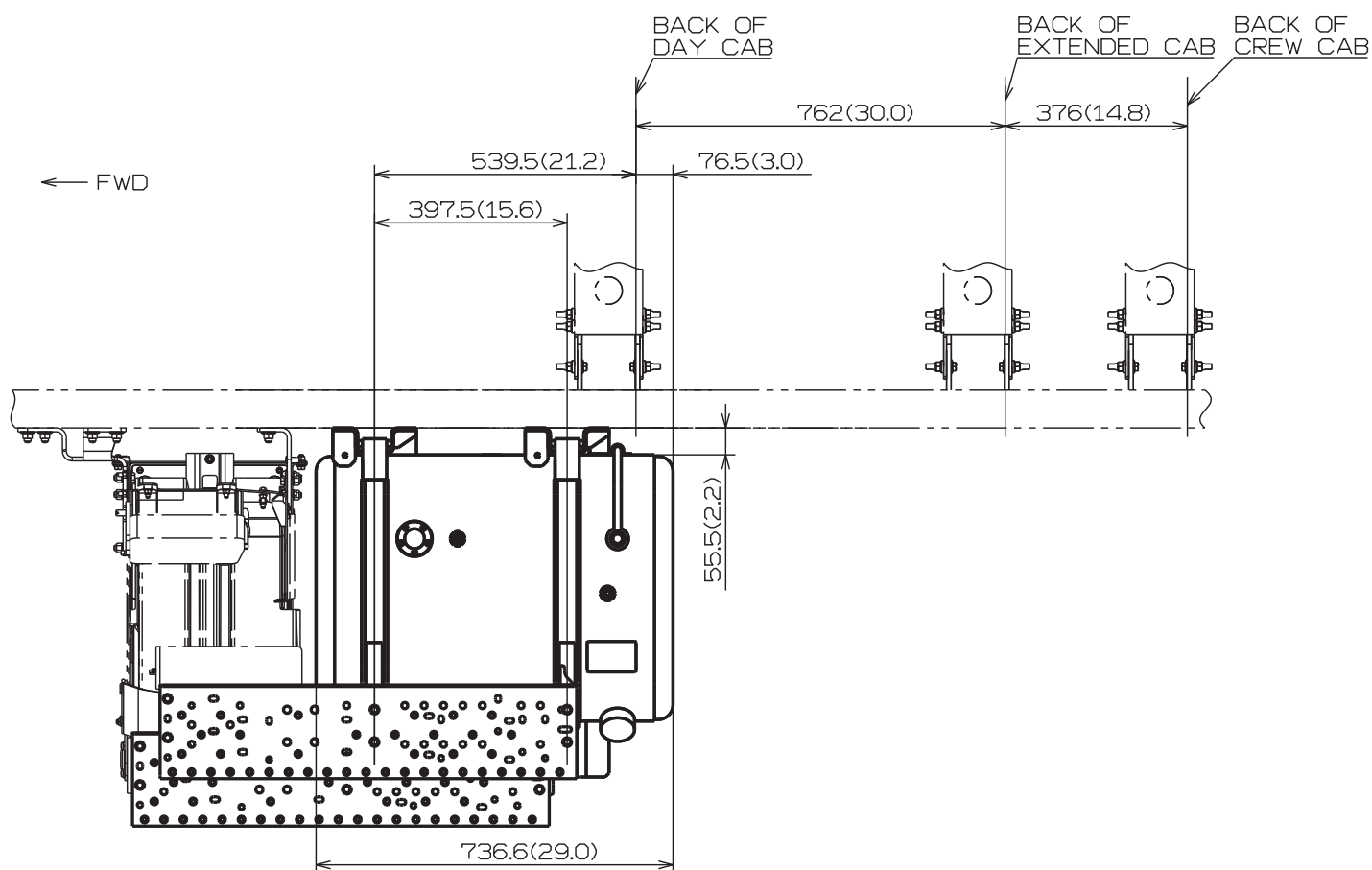
Unit : mm (in.)



REAR VIEW OF LEFT FUEL TANK SHOWN.

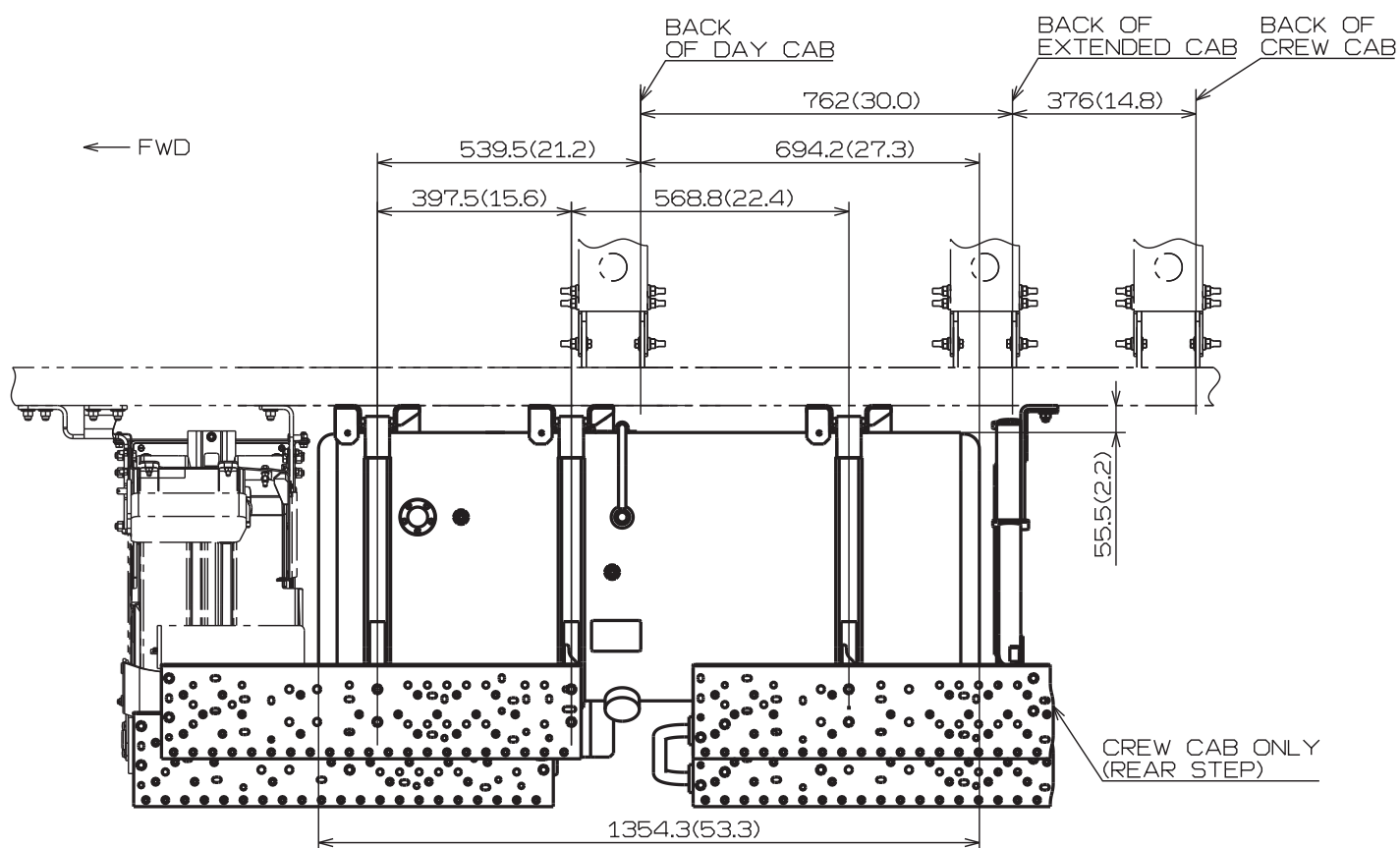
FUEL TANK WITH 2 MOUNTING STRAPS MOUNTED LEFT SIDE UNDER CAB. (TOP VIEW)**CAPACITY : 189L (50gal)**

Unit : mm (in.)



FUEL TANK WITH 3 MOUNTING STRAPS MOUNTED LEFT SIDE UNDER CAB. (TOP VIEW)**CAPACITY : 340L (90gal)**

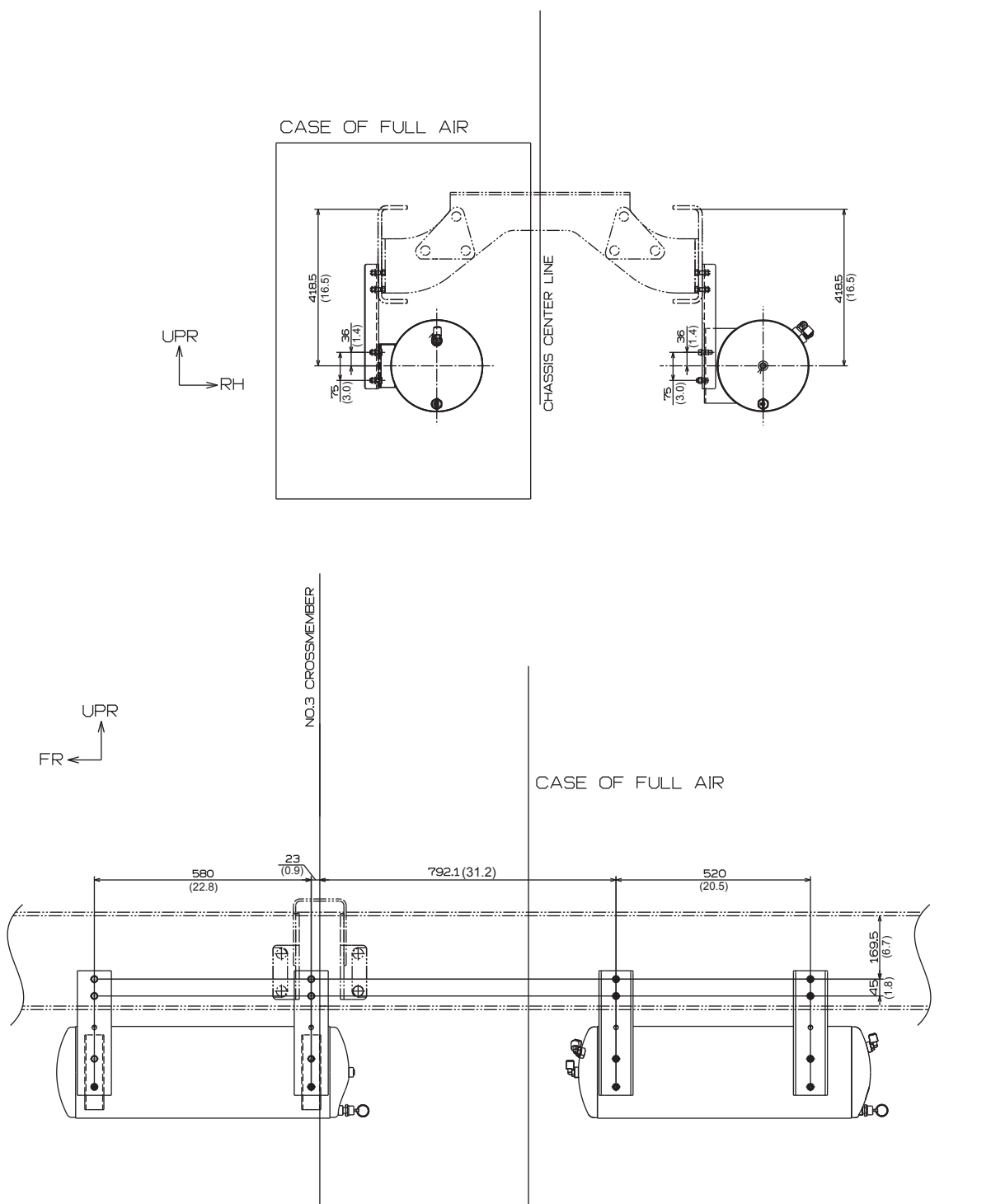
Unit : mm (in.)



2. AIR TANK

MODEL : NE(L6), NF(L7) <HYDRO>
 NJ(L6), NV(L7), NH(L8) <FULL AIR>

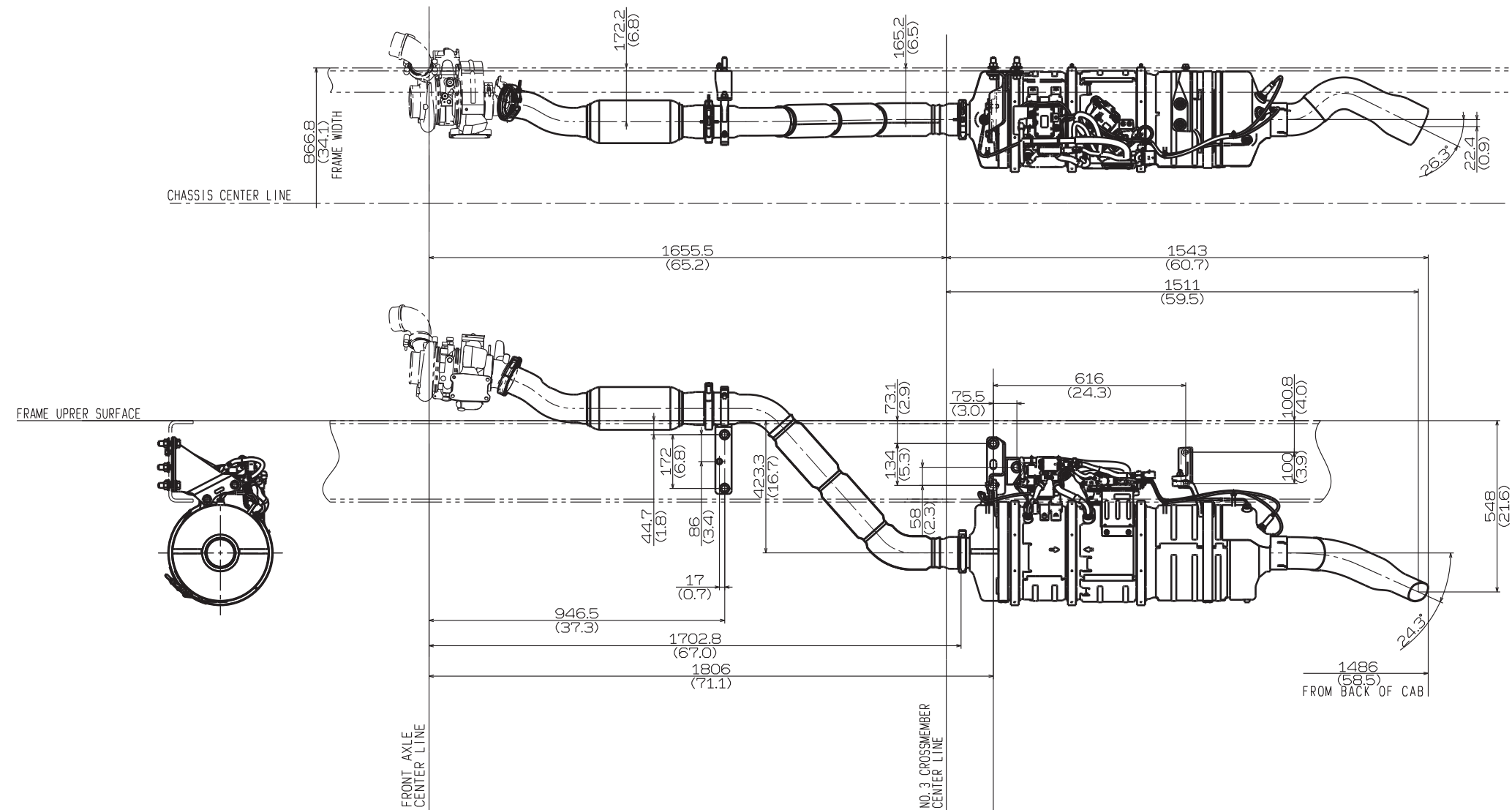
Unit : mm (in.)



3. EXHAUST SYSTEM

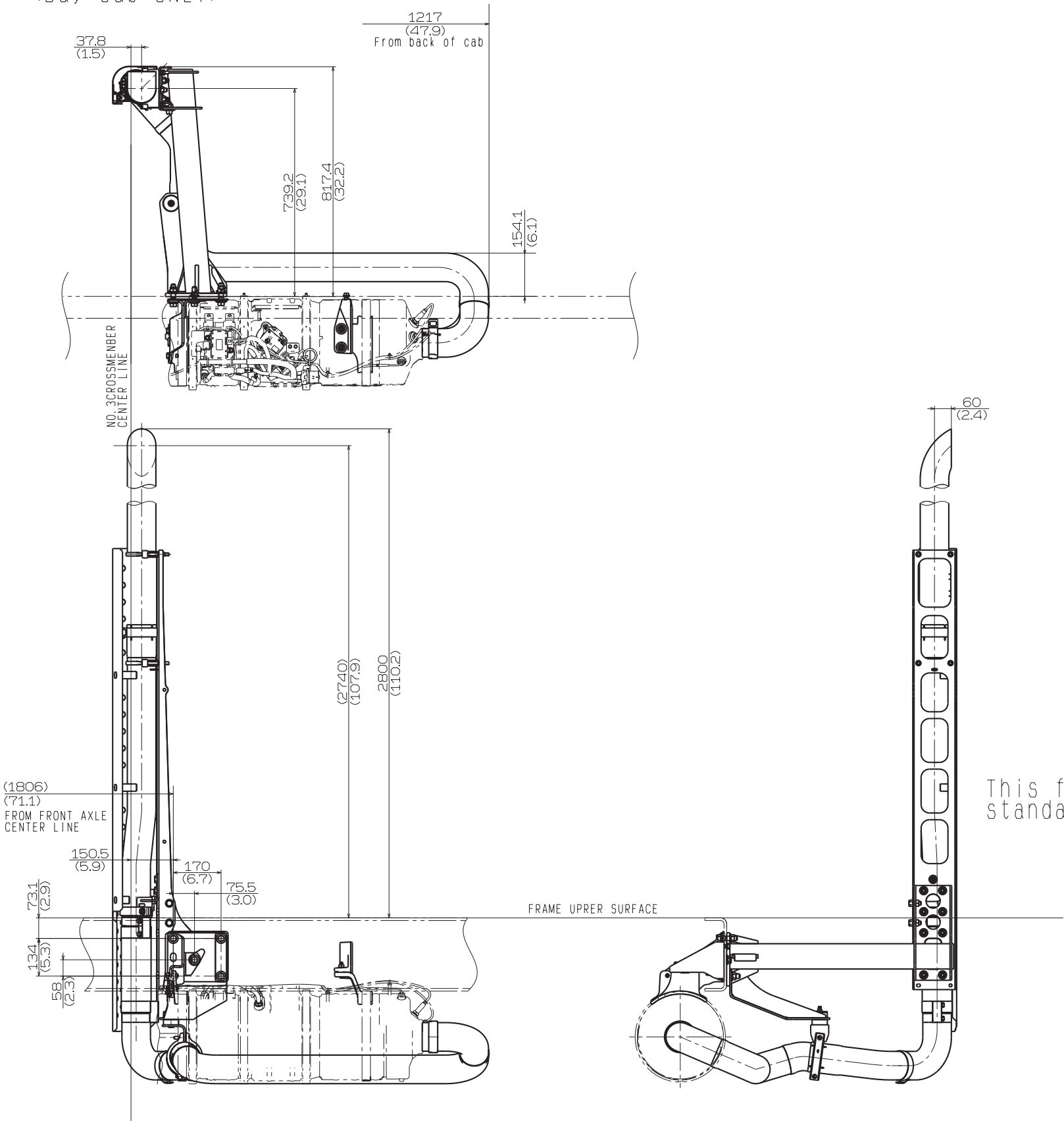
<Day Cab>

Unit : mm (in.)



VERTICAL TAIL
<Day Cab ONLY>

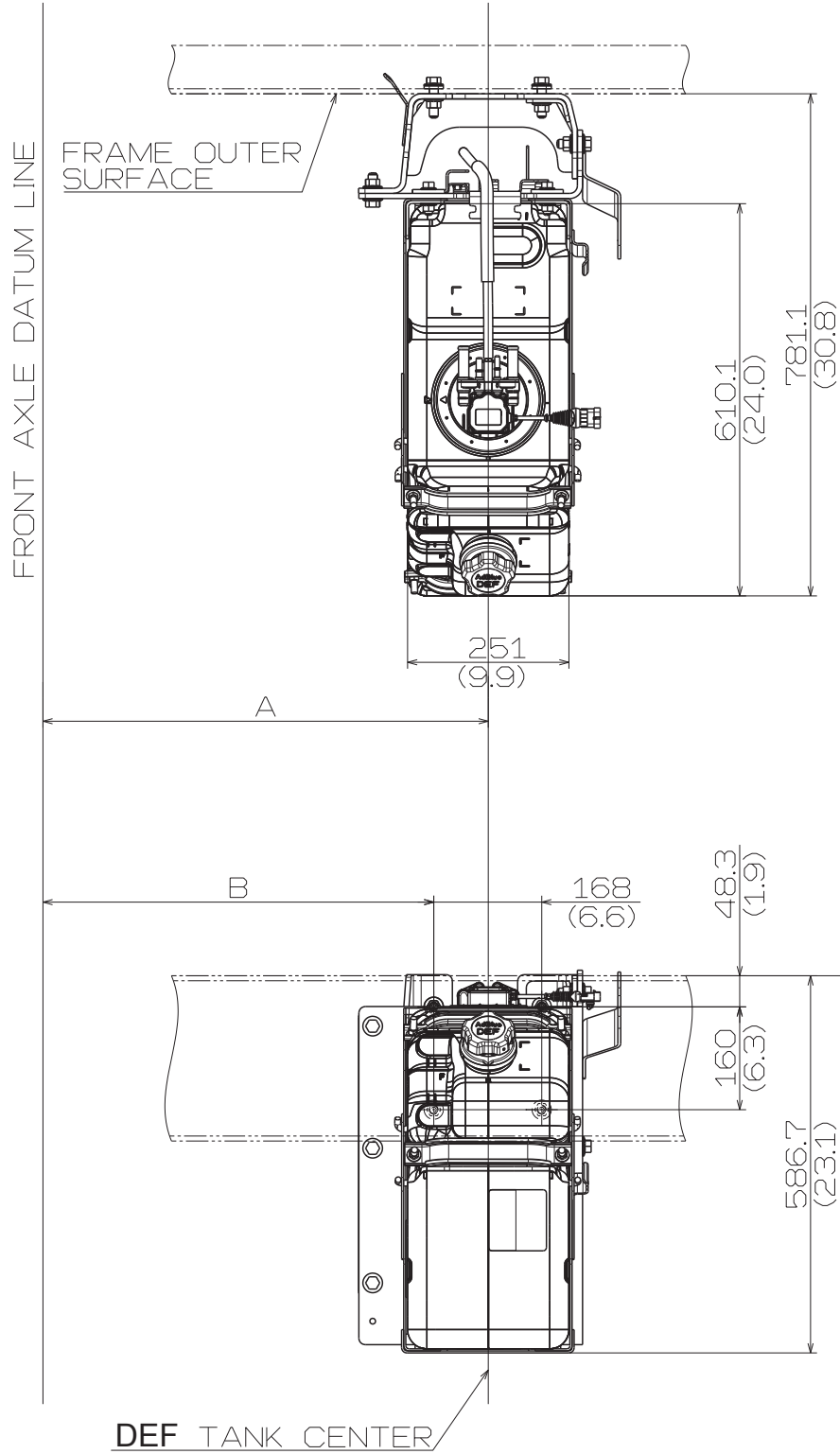
Unit : mm (in.)



4. DEF TANK

Unit : mm (in.)

OPTION
CAPACITY : 59L (15.6gal)



IN CASE OF
FRAME THICKNESS:7.8 (0.31)
FRAME HEIGHT:257.1 (10.1)

CAB SPECIFICATIONS	A	B
DAY CAB	2693 (106.0)	2608 (102.7)

